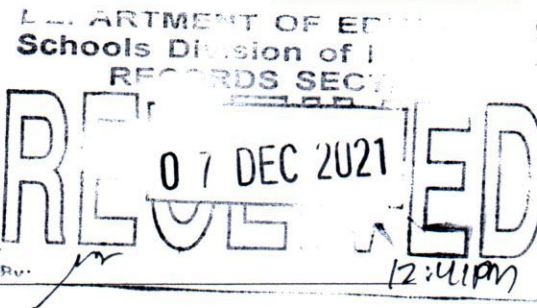




Republic of the Philippines
Department of Education
REGION IV-A CALABARZON
CITY SCHOOLS DIVISION OF BIÑAN CITY

Effectivity Date 08/05/2021
Revision No. 01



07 Dec 2021

DIVISION MEMORANDUM

No. 542, s. 2021

**DIVISION TRAINING PROGRAM ON FILIPINO SIGN LANGUAGE
(FSL-Basic Level 1)**

To : Assistant Schools Division Superintendent
Chief, School Governance and Operations Division
Chief, Curriculum Implementation Division
All School Heads

1. In line with DepEd Order No. 72 s. 2009 re: INCLUSIVE EDUCATION AS STRATEGY FOR INCREASING PARTICIPATION RATE OF CHILDREN and in coordination with DEAFED TRAINING AND ASSESSMENT CENTER, this office will conduct the DIVISION TRAINING PROGRAM ON FILIPINO SIGN LANGUAGE (FSL-Basic Level 1) on December 13-17, 2021, via Zoom Video Conferencing Platform.
2. This program aims to upgrade and train elementary and secondary teachers with the use of sign language as preparation for the inclusion of pupils with hearing impairment in the general education.
3. Participants to this training are as follows.

Elementary School	Name of Participant
Binan ES	Ma. Bernadette V. Secolles
	Gellie Ann E. Rodriguez
	Erlinda P. Cabance
	Kathleen Joy B. Constantino
	Herschelle M. Cernal
Southville 5A ES	Analelie L. Lunot
	Ma. Theresa F. Morillo
San Vicente ES	Remedios S. Mercado
Soro-Soro ES	Michelle N. Nolia
Dela Paz West ES	Ayssa Marie M. Casupang
Junior High School	Name of Participant
Binan Integrated NHS	Eliehkha Fave A. Escueta
	Myra A. Santiago
Southville 5A NHS	Danilo M. Ayong
	Mary Jane C. Cayabyab
Dela Paz NHS	
Nereo R. Qoauin NHS	Romina A. Leona
Jacobo Z. Gonzales Mem. NHS	Cindy R. Regidor
	Eilyn Pearl N. Nismal



Address: P. Burgos St. Brgy. Sto. Domingo, Biñan City Laguna

Website: depedbinancity.com.ph

Email: deped.binancity@deped.gov.ph

Telephone no: 511-4143/ 511-8620/ 511-4191/ 511-8746

Binan Secondary School of Applied Academics	Menchie P. Domingo
Stand Alone 2 (AFP-PNP) Senior HS-Timbao Annex	Jackylyn Del Carme

5. Participants' registration fees shall be paid and processed by the SDO. Other expenses to be incurred in the said program shall be charged against PSF on SPED.
6. For questions and clarification, you may contact Rhea D. Bilbes, Education Program Supervisor in-charge of SPED at (049) 511-8746.
7. Immediate dissemination of this Memorandum is desired.


EDNA FAURA-AGUSTIN
 Schools Division Superintendent

Encl: As stated
 Reference: DepEd Order No. 72 s. 2009

OSDS/ICT / DM- DIVISION TRAINING PROGRAM ON FILIPINO
 4056 / SIGN LANGUAGE
 (FSL-Basic Level 1)
 / 12/06/2021



DEAFED TRAINING AND ASSESSMENT CENTER

In cooperation of Full life School for the Deaf., Inc.

NON VAT TIN: 323-849-884

DMVC COMM. SPACE NATIONAL ROAD TUNASAN MUNTINLUPA CITY

Contact Number/s: 0919-007-8297 | 02 8442-2212 | 0975-6377-869

Email: deafedphi@gmail.com



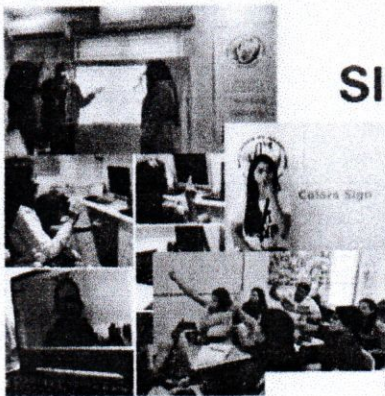
Asynchronous learning
7 days unlimited access
Learn anytime, anywhere
LIVE online class available!



LEVELS 1-4

FILIPINO SIGN LANGUAGE

5-7 SESSIONS



Digital Certificate
Handouts
Sign Ebook



Filipino Sign Language (FSL) or **Philippine Sign Language** (Filipino: *Wikang pagsenyas ng mga Pilipino*) is a sign language originating in the Philippines. Like other sign languages, FSL is a unique language with its own grammar, syntax and morphology; it is neither based on nor resembles Filipino or English.

☎ 0919.007.8297 | deafedphi@gmail.com |

Coach I | Reverend, Deaf Principal/Coach

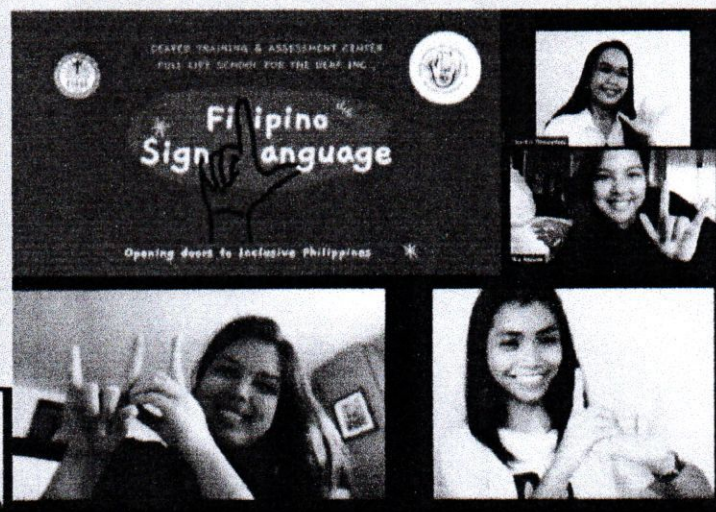


Coach P / FSL Advocate, LPT



Coach C | Deaf FSL Coach

Celebrities who trusts DeafEd Sign Language Workshops



DEAFED TRAINING AND ASSESSMENT CENTER

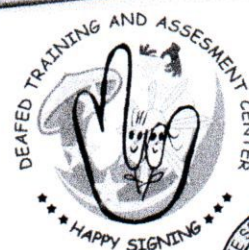
In cooperation of Full life School for the Deaf., Inc.

NON VAT TIN: 323-849-884

DMVC COMM. SPACE NATIONAL ROAD TUNASAN MUNTINLUPA CITY

Contact Number/s: 0919-007-8297 | 02 8442-2212 | 0975-6377-869

Email: deafedphi@gmail.com



FSL Workshop Outline

Suggested Program Flow for DAY Workshop

20 minutes	Introduction
1 hour	Talk proper
10 minutes	Q&A
-	Break
1 hour & 10 minutes	FSL Workshop
10 minutes	Q&A

**Program Flow is subject to change*

• **Hearing Professional Coach**

The one who can share expertise on how to communicate to the Deaf Community, explains the difference of FSL to other sign language and the one who will motivate the hearing participants to learn this new language.

❖ Time allotment: Talk proper (1 Hour & 20 minutes); Q&A (10 minutes).

• **Deaf Coach (Native Signer)**

❖ The one who will teach the Filipino Sign Language and signs for each word.

❖ Time allotment: Sign proper (1 Hour & 20 minutes); Q&A (10 minutes).

DEAFED TRAINING AND ASSESSMENT CENTER

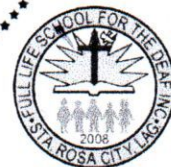
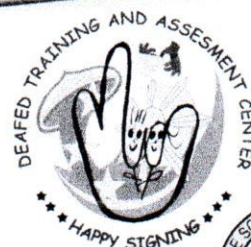
In cooperation of Full life School for the Deaf., Inc.

NON VAT TIN: 323-849-884

DMVC COMM. SPACE NATIONAL ROAD TUNASAN MUNTINLUPA CITY

Contact Number/s: 0919-007-8297 | 02 8442-2212 | 0975-6377-869

Email: deafedphi@gmail.com



Talk Proper and Workshop Content

DAY Workshop

Talk Proper	Deaf Culture <ul style="list-style-type: none">• Importance/Why it matters• Technicalities of Sign Language• Disability Perspective• Testimonies* Communicating with the Deaf <ul style="list-style-type: none">• Misconceptions• Acceptable and unacceptable terms to use
Sign Proper	Filipino Sign Language with Deaf Coach <ul style="list-style-type: none">• Fingerspelling<ul style="list-style-type: none">• When to use• Importance• Introduction of Oneself<ul style="list-style-type: none">• Sign name• Output (Sign Video)• Numeracy (1-20, 22-99, 100, 1000)• Colors• Greetings• Terminologies (most commonly used)

**Topics above are subject to change*

• **Talk Proper**

- ❖ Essential in learning sign language specially to beginner participants who has a very little – No knowledge of Sign language.
- ❖ Time allotment: Talk proper (1 Hour & 20 minutes); Q&A (10 minutes).

• **Sign Proper**

- ❖ The main event of the day. The time where the participants will learn sign language thru the help of Deaf Coach.
- ❖ *Muted session*: for holistic experience.
- ❖ Time allotment: Sign proper (1 Hour & 20 minutes); Q&A (10 minutes).

• **Addendum:**

- ❖ OPEN VIDEO SESSION
- ❖ Recorded for back-up and documentation purposes
- ❖ Final output and evaluation transparency
- ❖ Choice of **Full / Partial** Workshop Package

DEAFED TRAINING AND ASSESSMENT CENTER

In cooperation of Full life School for the Deaf, Inc.

NON VAT TIN: 323-849-884

DMVC COMM. SPACE NATIONAL ROAD TUNASAN MUNTINLUPA CITY

Contact Number/s: 0919-007-8297 | 02 8442-2212 | 0975-6377-869

Email: deafedphi@gmail.com



FILIPINO SIGN LANGUAGE LEVEL 1 | BASIC

WORKSHOP PACKAGE RATES

TYPE OF PACKAGE	DETAILS	DURATION
FULL PACKAGE 1,000 per pax *minimum of 10 *discount starts 30 and above	<ul style="list-style-type: none">• 7 sessions• <i>Digital Certificate</i> (Certificate of Training, 8 hours)• Handouts• Sign Ebook *DeafEd Easy Signs• Recorded Session	40 – 60 minutes *40 Min. sign proper *20 Min. allotted for off-cam practice/take home activities TOTAL NO: 8 HOURS
PARTIAL PACKAGE 1 500 per pax *minimum of 30 *discount starts 50 and above	<ul style="list-style-type: none">• 4 sessions• <i>Digital Certificate</i> (Certificate of Training, 4 hours)• Handouts• Sign Ebook *DeafEd Easy Signs• Recorded Session	30 – 40 minutes *30 Min. sign proper *10 Min. allotted for off-cam practice/take home activities TOTAL NO: 4 HOURS
PARTIAL PACKAGE 2 300 per pax *minimum of 50 *discount starts 50 and above	<ul style="list-style-type: none">• 1 session (Day Workshop)• DeafEd Easy Signs• Handouts• <i>Digital Certificate</i> *To be issued by the requesting party• Recorded Session	3 hours TOTAL NO: 3 HOURS

*Half of the workshop proceeds will be donated to Deaf and Blind foundation for more advocacy projects for PWD Community.

*Down payment is required to schedule a workshop date.

CERTIFICATION REQUIREMENTS:

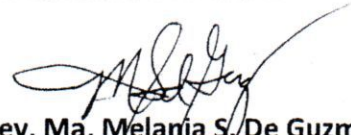
- MUST PASS 70% of Online Assessment (20 item examination)
- MUST SUBMIT Final Output Sign Performance (please see target output per level)

Prepared By:

Received By:


Pia Anne Gonzales-Jacinto, LPT
Advocacy Coordinator, DeafEd

Name & Signature


Rev. Ma. Melania S. De Guzman
Program Chair, FSLD (Deaf Principal)

DEAFED TRAINING AND ASSESSMENT CENTER

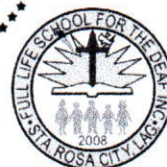
In cooperation of Full life School for the Deaf, Inc.

NON VAT TIN: 323-849-884

DMVC COMM. SPACE NATIONAL ROAD TUNASAN MUNTINLUPA CITY

Contact Number/s: 0919-007-8297 | 02 8442-2212 | 0975-6377-869

Email: deafedphi@gmail.com



Filipino Sign Language

MODES OF LEARNING;
FREE BASIC CLASS
PAID SMALL GROUP CLASS
ASYNCHRONOUS CLASS
ONE-ON-ONE /DYAD
SPECIAL GROUP

ALSO AVAILABLE: (PM FOR MORE INFO.!!)

FSL
1-4

ASL
1-3

ISL
BASIC

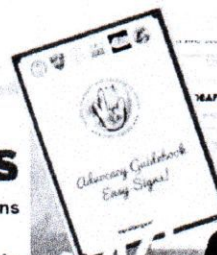
EDSIGN

#endlanguagebarrier



e-Kits

DeafEd Easy signs
Handouts
Digital Certificate



JOIN NOW!

*half of the proceeds will be donated for DeafEd Advocacy projects



DEAFED SIGN LANGUAGE COURSES

deafedfsl@gmail.com 0919.007.8297



ISL

INTERNATIONAL
SIGN LANGUAGE

BASIC

FSL

FILIPINO SIGN LANGUAGE

Levels 1-4

ASL

AMERICAN
SIGN LANGUAGE

Levels 1-3

EDSIGN

EDUCATIONAL
SIGN
LANGUAGE

BASIC

INCLUDED: SIGN EBOOKS, HANDOUTS, DIGITAL CERTIFICATE